

Instruction for assembly and use of Door Barrier DB-1.

Please devote enough time to the assembly reading the instructions carefully.

Important

Only the proper and suggested way of assembly guarantees the maximum protection of your child.

Please take care of the following details:

The Door Barrier DB-1 can be used for openings 62-104cm.

They may only be assembled in a stable and clean door frame.

This door barrier is designed for children up to 24 months; but this is only an estimated data since children develop differently. Beyond this age they run the risk of climbing beyond the gate.

Do not leave your child unattended. This is how to prevent accidents.

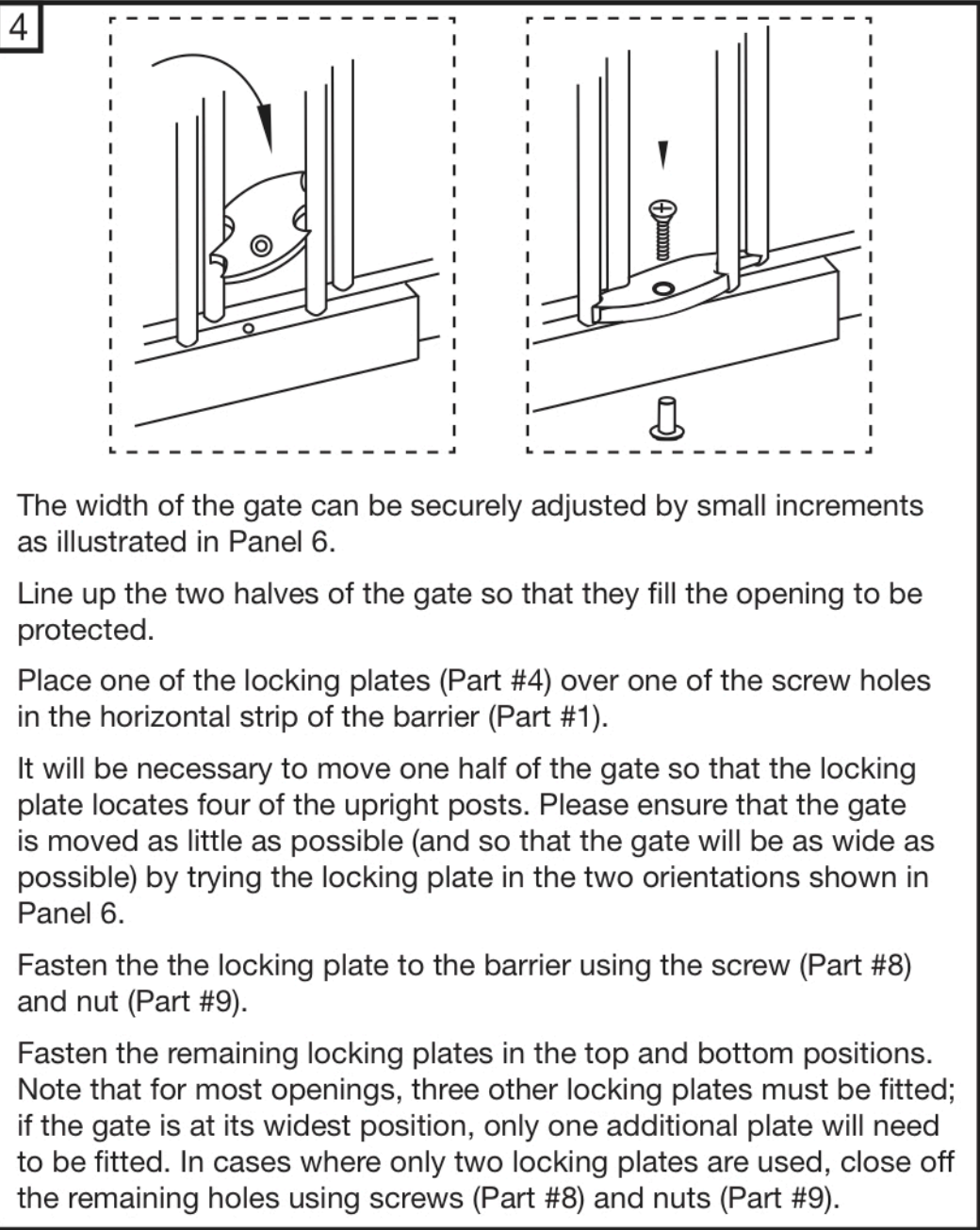
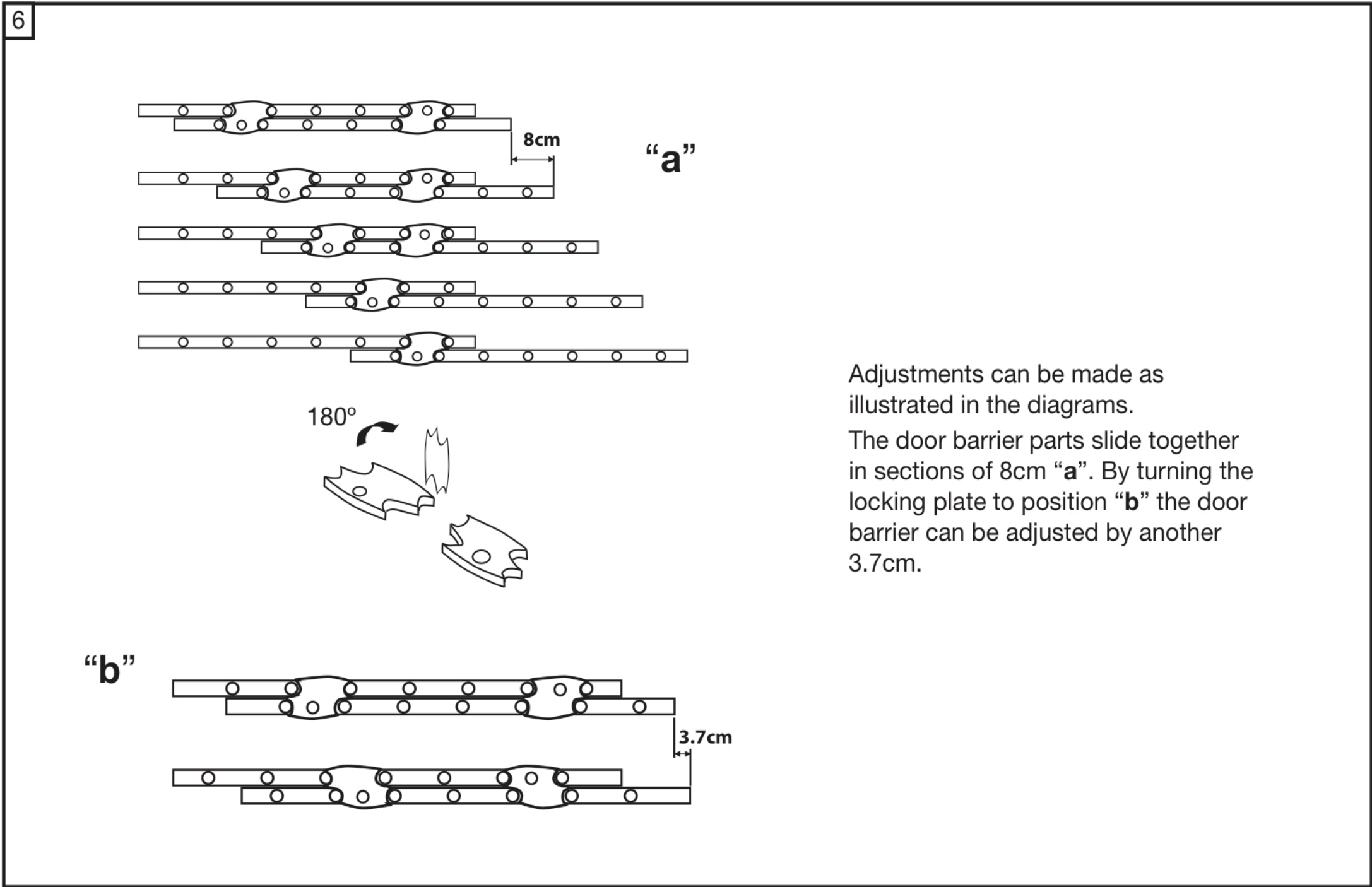
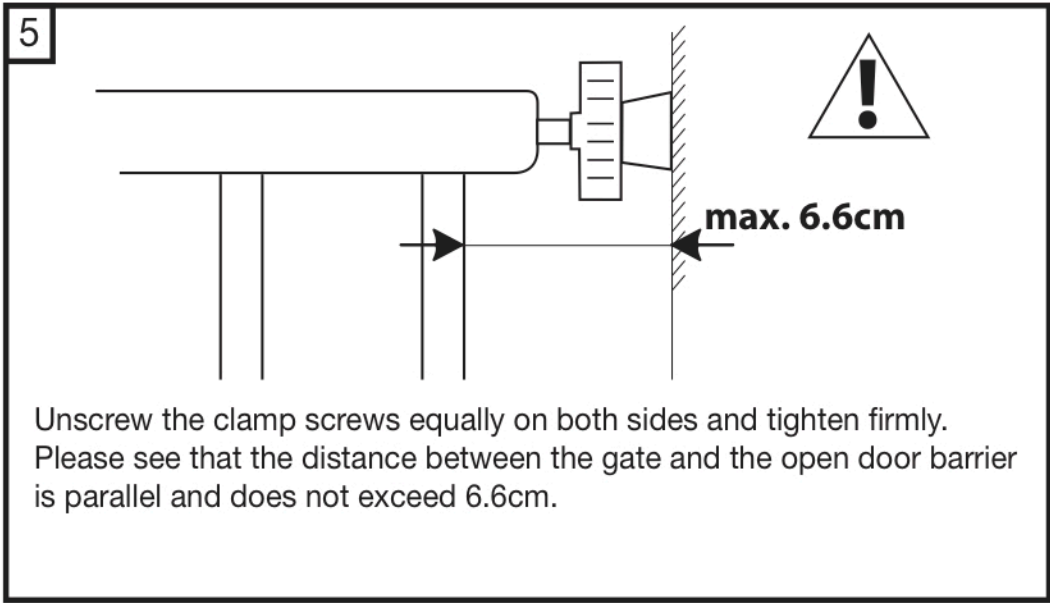
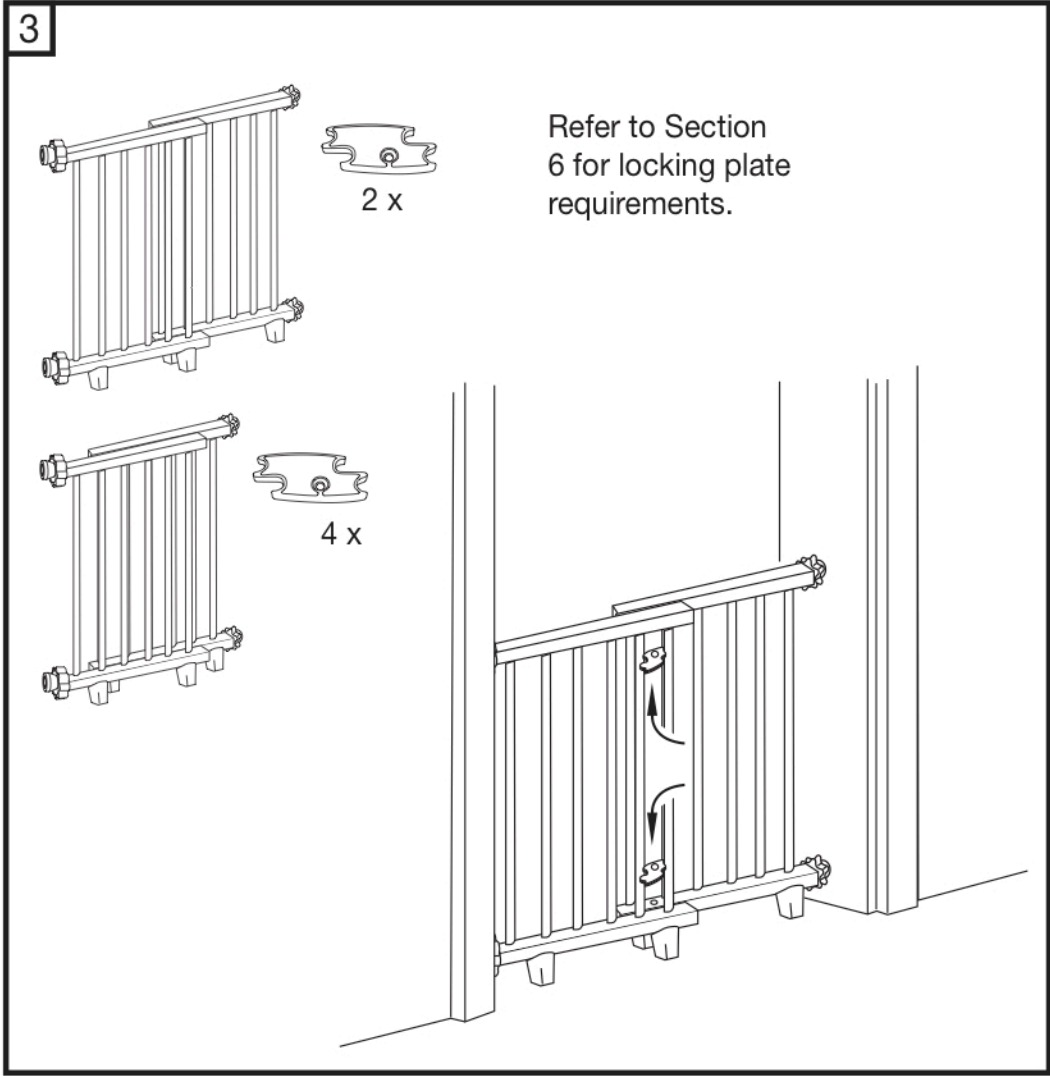
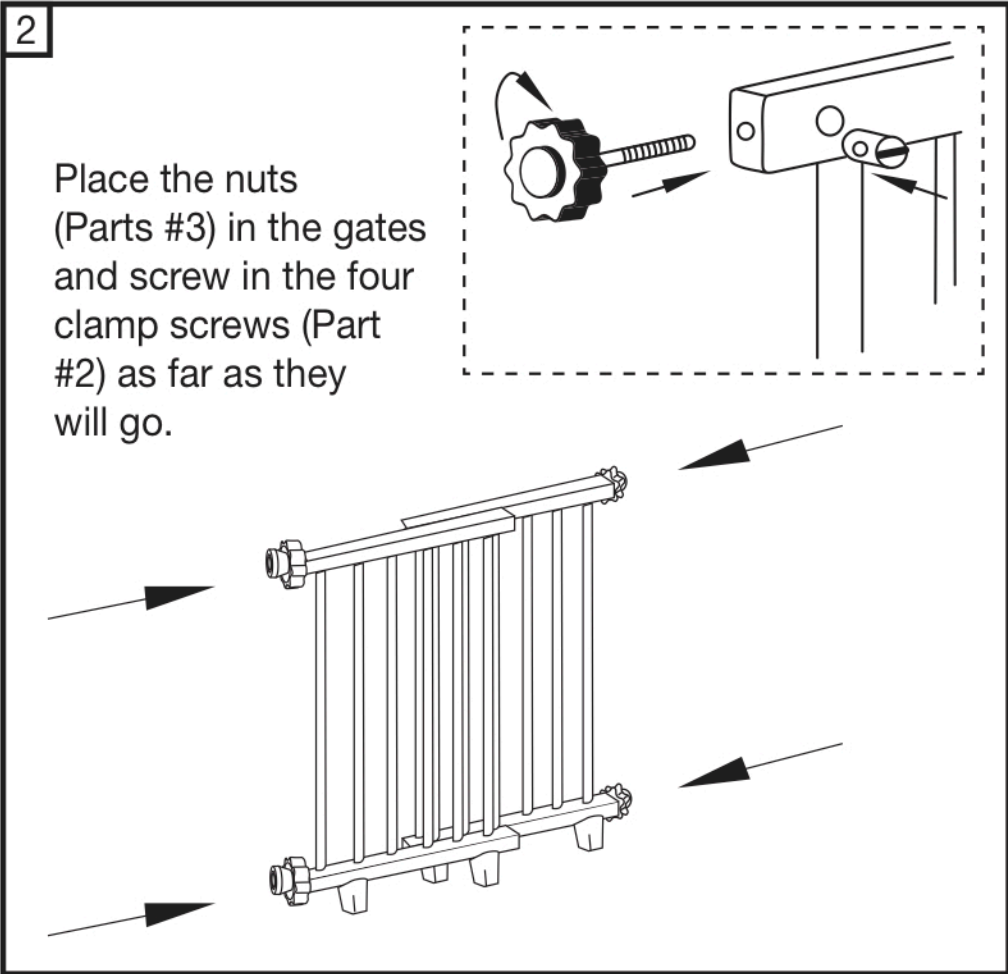
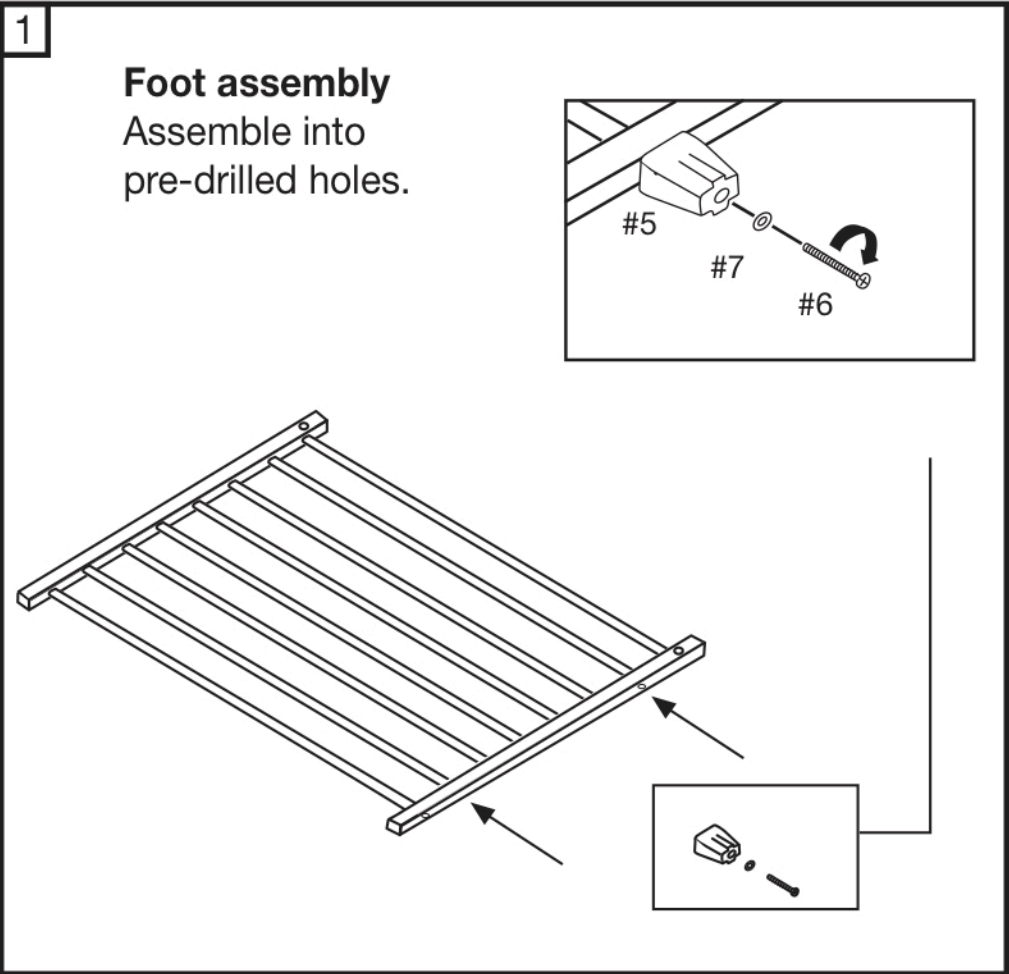
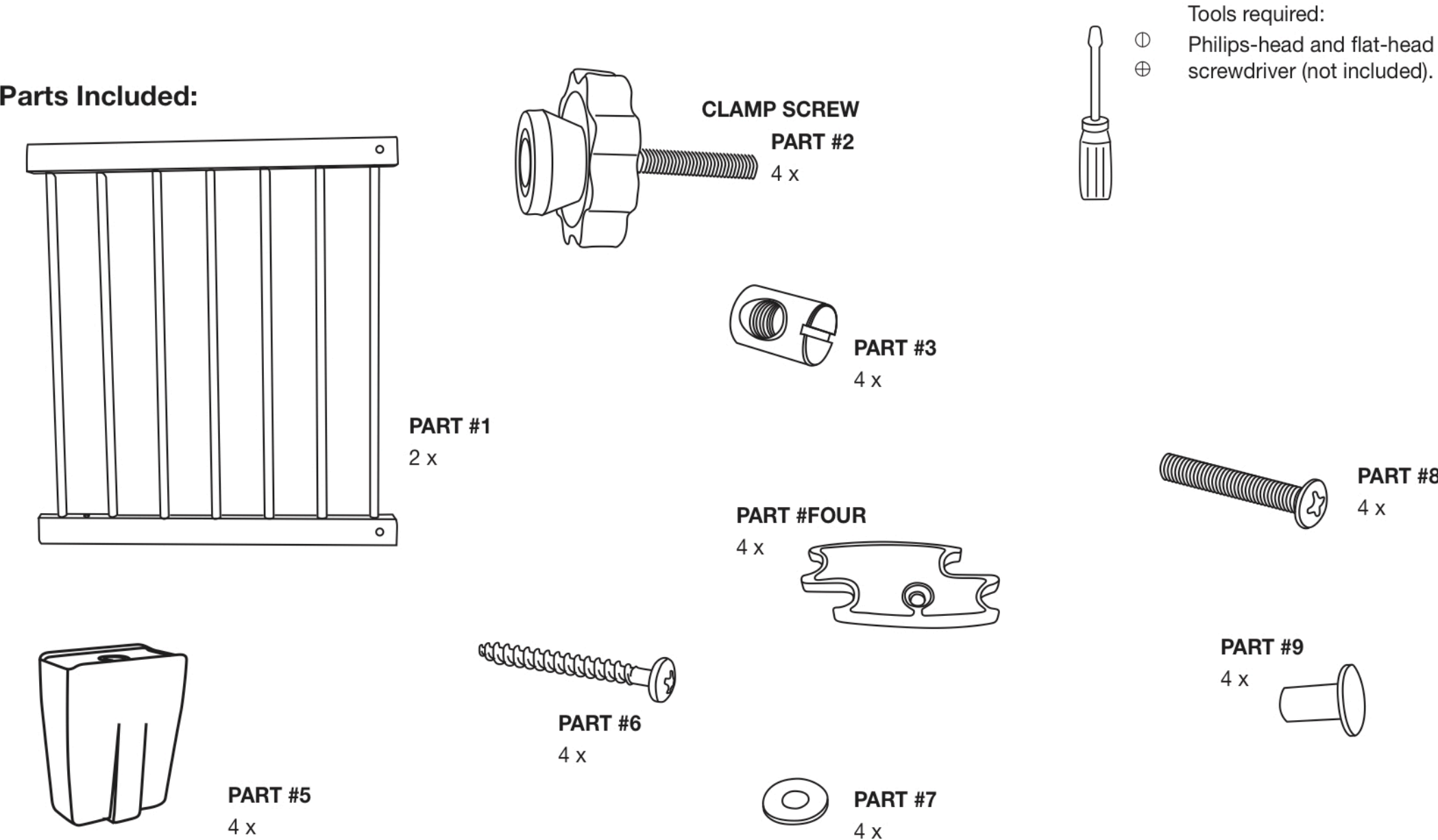
After assembly please once again check according to the instructions whether the door barrier is solid and in working order. Please also check regularly the condition of the door barrier, especially the function of the locks.

Only spare parts supplied by the manufacturer are to be made use of.

- ! WARNING:**
- To prevent serious injury, securely install the door barrier, and always follow these instructions in use.
 - Never use with a child able to climb over or dislodge the door barrier.
 - Never leave child unattended.
 - Use only with the locking/latching mechanism securely engaged.
 - Door barriers are made for children up to 24 months of age only.
 - The product is not to be used with a child able to climb over or dislodge the door barrier.

- ! IMPORTANT:**
- Please keep for future reference.
 - Clean product with warm water.

Parts Included:



Troubleshooting

The gate cannot be clamped	One of more adjustment screws run idle	<ul style="list-style-type: none">- Check whether the gate is parallel to the door frame- Fix the adjustment screws and once again adjust the gate's width (No. 4); you can unscrew the adjustment screws max. 3.5cm on each side.
----------------------------	--	---